



## SERVICE BULLETIN #XTMMFX - 001



RE: Mini Max FX Grey Tank Vent Pipe System.

**OVERVIEW:** This Service Bulletin covers the inspection and potential modifying the Grey tank vent pipe system.

**MODEL:** Little Guy Mini Max FX.

**PROBLEM:** It is possible that the vent pipes are too long and too near the bottom of the Grey tank not allowing for good draining of the shower pan and/or shower/galley sink.

**CORRECTION:** The white 1 1/2" PVC Vent pipes need cut or holes drilled to allow the Grey tank assy. to fill and drain properly.

**WHAT TO USE:** See picture on page 1 and 2

**SUMMARY:** The issue does not appear to be widespread but has the potential to occur on Mini Max FX

trailers in the VIN range **7RUTT1813P1000407-7RUTT1815P1000425**  
**7RUTT1810P1000459-7RUTT1814P1000478**  
**7RUTT1819P1000511-7RUTT181XP1000534**  
**7RUTT1819P1000542-7RUTT1815P1000554**

**Please contact us with any questions, concerns or comments:**

Technical Service: 814-485-2977      Factory Main Line: 814-444-1001

Warranty Line: 814-444-6679      Corporate Sales Office: 888-469-8688

- [warranty@goxtoutdoors.com](mailto:warranty@goxtoutdoors.com)

- [ts@goxtoutdoors.com](mailto:ts@goxtoutdoors.com)

- [support@goxtoutdoors.com](mailto:support@goxtoutdoors.com)

**Labor Time: 1.0hr + supplies**

Sincerely, Xtreme Outdoors, LLC



### Tools Needed:

Cut-off Saw w/ long handle

5/16" Socket

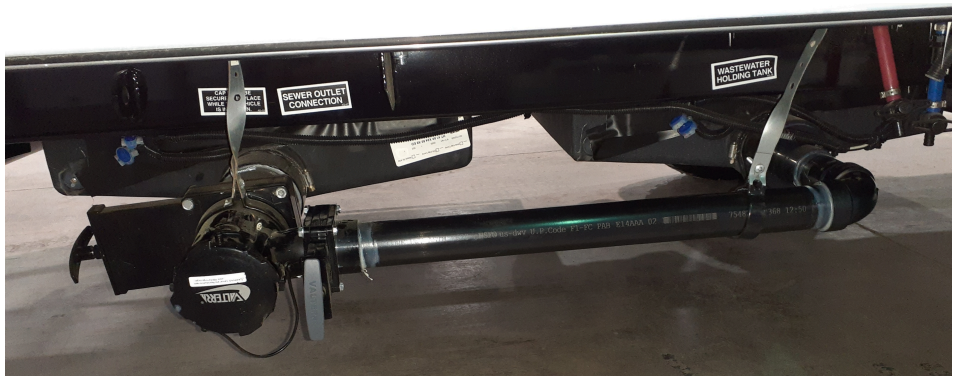
Phillips P2 bits

5/8" Spade Drill Bit 14"

Drill Bit Extension 12"

Caulking

Flathead Screw Driver



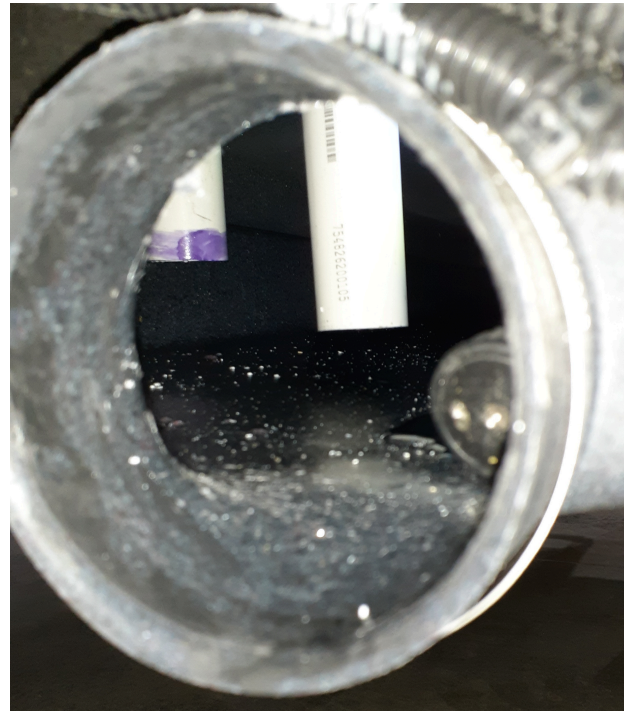
Remove the slicer valve bolts/nuts x4 on the Waste tank assy. and then loosen the hose clamp that is around the ABS reducer inlet on the grey tank assy. remove hanger strap and pull out the plumbing assy. from the grey tank assy.







With the inlet assy. removed look inside the tank the white PVC Pipes should only be about 1" or so into tank from top of the tank rubber grommets. If they are too long like the pic. they will need cut off at the desired length of approximately 1" or drill a 5/8" hole with a spade bit and extension. See pic below:



Pipe on the right needs to be cut to approx. 1" from the top of rubber grommet. see pic below.



Pipe on the left can be cut if possible, but if not possible drill a 5/8" hole through both sides of the pipe using a spade bit w/ bit extension.



**Reassemble and test for water leaks...**