



LITTLE GUY MAX

TRAINING GUIDE FOR DEALERS



ABOUT XTREME OUTDOORS



100k sq. ft. Facility in Somerset, PA

Xtreme Outdoors is a family of trailer brands consisting of Little Guy Trailers. Xtreme Outdoors is headquartered in Uniontown, Ohio.



The **Little Guy Max** is manufactured by American workers in Somerset, PA at a 135k sq. ft. facility employing about 60 people with 20-30 years of RV manufacturing experience.

Learn More About Xtreme Outdoors:
<http://www.goxtoutdoors.com/>

Learn More About Little Guy Trailers:
<http://www.golittleguy.com/>

Access our Dealer Portal
www.golittleguy.com/docs
Password: #littleguy1



ABOUT XTREME OUTDOORS PRODUCT LINES



← *Assets of previous manufacturer purchased in July 2019*

New Manufacturing Company Formed in Early 2017.

Xtreme Outdoors consists of Little Guy brands.

**** ATTENTION MARKETING DEPARTMENT ****

Manufacturer	Brand	Model (Expected Release)
Xtreme Outdoors	Little Guy Trailers	Max*
Xtreme Outdoors	Little Guy Trailers	Mini Max*
Xtreme Outdoors	Little Guy Trailers	Micro Max (2021)
Xtreme Outdoors	Little Guy Trailers	MyPod (2020)

* Covered in this guide.

Please Note:

T@B, T@G, and Cirrus brands are no longer associated with Little Guy. Our manufacturing agreement with these brands ended in late 2016.

NüCamp is a direct competitor to Xtreme Outdoors.

Little Guy Teardrop Trailers are high quality luxury trailers.

"The Porsche of Teardrop Trailers"

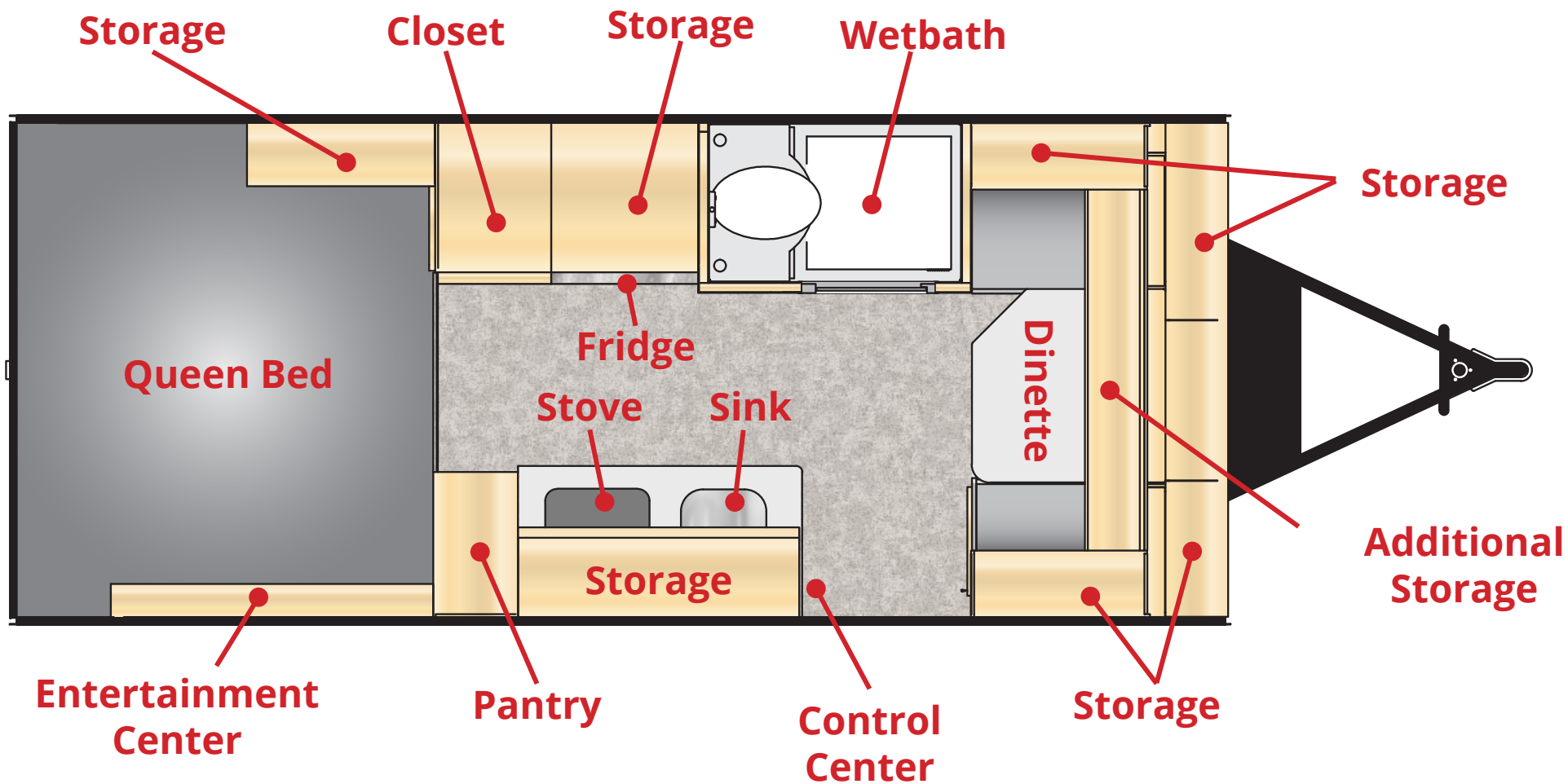
LITTLE GUY MAX OVERVIEW



How Do We Compare To The Competition?



FLOOR PLAN



EXTERIOR CUSTOMIZATION



White Body | Black Trim



White Body | Silver Trim



White Body | Red Trim



Silver Body | Black Trim



Silver Body | Silver Trim



Silver Body | Red Trim



ROUGH RIDER PACKAGE

- Adds 15" West Lake CR857+ Tires
- Available Option On All Maxes



INDUSTRY-LEADING WARRANTY PROTECTION

TIRES - LIMITED WARRANTY - 5 YEARS

- Kenda will replace the tire for any reason as part of their 12 Month Worry-Free Warranty
- 24/7/365 Roadside Assistance for 2 Years

PERFORMAX 500 FLOORING - 2 YEARS

- Resin layer to prevent moisture penetration
- Advanced resin technology for increased stiffness and strength
- Ovation® overlay is thermally fused to the panel providing a 100% bond that will not peel or de-laminate during use

ROOF CONSTRUCTION - 2 YEARS

- Seamless fiberglass roof. No seams means less chance for leaks.
- Azdel/composite backed fiberglass skin to create a wood-free and rot-free construction.

AXLES - 10 YEARS

- Industry-leading Dexter axles.
- Rubber torsion axles for a lower profile and better towing.

3M EXTERIOR GRAPHICS - CLEARCOAT FINISH - 7 YEARS

- Minimal fading & color shifting when exposed to environment
- Specifically designed formula for vehicle application

SELECTED COMPONENT MANUFACTURERS ARE IN LINE WITH OUR CORE COMPANY VALUES

- Many components used in our trailers carry an extended warranty through the equipment manufacturer.



1 YEAR LIMITED WARRANTY

IS IT TRANSFERABLE?

- NO, it can no longer be transferred by a retail purchaser to a subsequent purchaser
- The warranty will not extended beyond the three (3) year coverage period.

WHAT DOES THE WARRANTY COVER?

- Defects in materials and workmanship supplied by and attributable to Xtreme Outdoors' manufacturing and assembly of the RV.

FEATURES & BENEFITS vs. COMPETITORS

Feature	Benefit	Competitor Comparison
3 Years Structural Warranty	1 year covers entire trailer. 3 years structural.	Most competitor warranties do not cover the entire trailer, and are severely limited.
Flooring	PerforMAX 500 flooring with 2 year warranty. Prevents moisture penetration.	Cheap, insufficient flooring materials. Allows moisture to leak in more easily.
Dinette Cushions	Holds up to the rigors of marine industry requirements, provides superior protection.	Typically cloth, much quicker to hold moisture and odors over time.
Tires & Wheels	The Max uses 15" aluminum wheels. Off-road tires available in the Rough Rider package.	Most trailers in this class use 14" steel wheels. Typically, no off-road option is available.
Pass Through Storage	Class-leading storage space with huge doors, magnetic latches, and LED-lit compartment	Typically no pass through storage. Overall storage space is much smaller.
Heating System	The Max has more efficient ducted heat. Digital thermostat is one piece, works just like your house.	Similar trailers cheap out on temperature control, using separate analog gauges.
Ceiling Height & Room	6' 7" interior height in the Max, can accommodate just about anyone. Overall, very roomy.	Typically cramped with a shorter ceiling height. Inefficient use of space with many round edges.
Kitchen Sink & Faucet	Residential style, 16"x16", stainless steel sink with removable spray faucet arm. Conserves water.	Smaller trailers will usually cheap out on the sinks and faucets. Shallow, with limited range.
Wetbath & Shower	The Max includes a glass shower door and a residential style floor-to-ceiling surround.	Typical in this class is a wooden shower door and substandard moisture protection.
Cabinetry	100% hardwood, not laminate. Dovetail joint construction. Choice of Maple or Cherry species.	Another area where competition cheap outs. Poor construction, laminate "wood" cabinets.
Solar & Backup Camera Prep	The Max comes fully prepped. No wiring necessary. Simply add the option when ordering.	Adding these options is usually more complicated. Wiring may be necessary.
Smart Power Control	Fridge auto-switches propane, electric, or battery. Hot water tank runs on electric or propane.	Very little in the of way smart power control. Everything is typically manual in this class.

Our Take: Overall, the Little Guy Max may carry with it a higher price tag, but the quality, attention to detail, and additional touches noted above will save the customer cost, frustration, and down-time in the long run. The informed, savvy customer will respond positively to the mention of these items, which will help overcome any skepticism the customer has on the price tag. **High End - Quality - Luxury**

FLOORING



Inside: Luxury Sheet Vinyl Flooring

INSIDE: LUXURY SHEET VINYL FLOORING

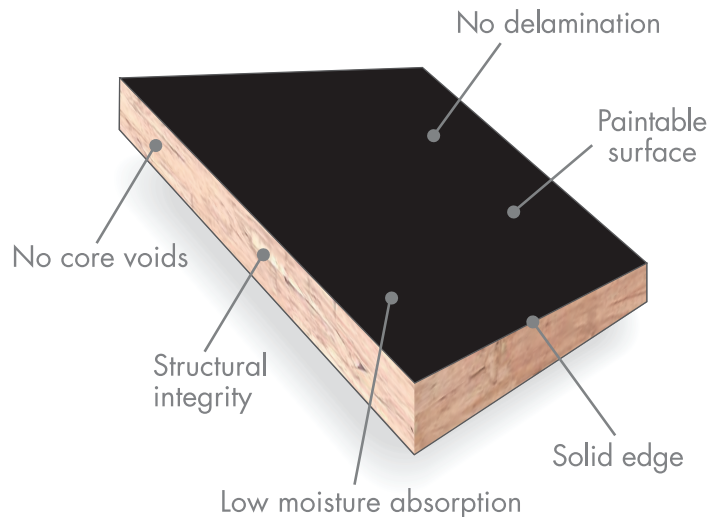
- Moisture will bubble up, won't seep in.
- Spills are easy to clean up. Can use a household cleaner.

OUTSIDE: PERFORMAX 500 WITH RESIN LAYER

- Resin layer prevents moisture in the subfloor.
- Lack of vapor barrier allows for breathability.

PerformMAX 500
with the protective Ovation™ overlay

The Little Guy Max uses PerformMAX 500 moisture resistant engineered wood products, which are stronger and more dimensionally stable than plywood.



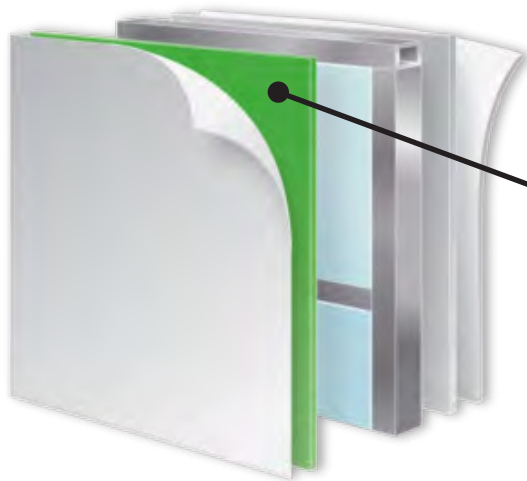
Outside: PerformMax 500 with Resin Layer

COMPETITOR COMPARISON

- Allows moisture to seep in more easily.
- Harder to clean.
- Overall cheaper materials that will break down over time.



WALL CONSTRUCTION



Azdel Composite Panels are laminated to the fiberglass exterior sidewalls to create the strongest and most lightweight wall available on a teardrop.



The Little Guy Max uses Azdel Composite Panels to replace wood in its sidewalls and interior panels. Made in the USA, Azdel Composite Panels are constructed using a blend of polypropylene and fiberglass, creating an extremely strong and lightweight wall.

KEY POINTS:

- Very few lightweight trailers have Azdel
- 50% lighter than wood
- Impervious to water
- 3x the insulation value of wood
- Absorbs sound and energy

COMPETITOR COMPARISON

- Uses heavier composite wood construction.
- Lacks the moisture protection, insulation, and sound proofing qualities that Azdel provides.

TRIM & CORNER CONSTRUCTION

A common misconception is that gaps in the trim may lead to leaks. The trim is sealed underneath.



Under Trim Piece. Sealed with EternaBond tape. EternaBond tape is heavy-duty sealing tape used most commonly for military applications.



Finished Little Guy Max Trim Piece with EternaBond tape underneath.

TOWING / LEVELING



Smart Jack™ with available Jack-IT™ Bike Rack on the Little Guy Max



LED Light Package for Ball & Coupler



Backlit Buttons for Height Adjustment

SMART JACK™

Next Generation Power Tongue Jack

With hitch height recognition, users can simply press the hitch height button and walk away. No need to stand and hold the extend button. With a stored hitch height, the Smart Jack will automatically extend.

KEY POINTS:

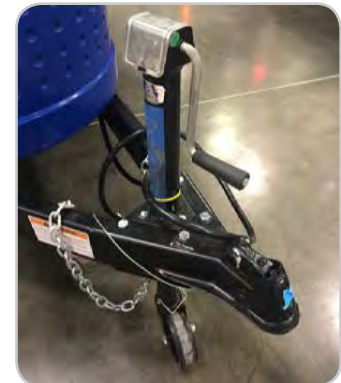
- Hitch height memory settings
- No more cranks
- Backlit buttons, reduces battery drain
- LED light package shines down onto ball and coupler

* Smart Jack is optional



COMPETITOR COMPARISON

- Uses old-school labor-intensive hand cranks.
- Lacks LED lighting
- Lacks one touch hitch height memory settings.



WINDOWS, LIGHT, & SPACE



7 LARGE DUAL-PANE WINDOWS

The **Natural Light** and the amount of windows inside the Max is a **WOW Feature** that should be pointed out whenever possible.

6'7" INTERIOR HEIGHT

The Max is very roomy compared to other models in it's class. The 6'7" interior height will accommodate almost everyone who steps inside.

KEY POINTS:

- Euro-style, insulated, dual-paned acrylic windows
- Integrated shades and screens
- Wider window opening than most RVs
- Tinted windows for privacy and temperature control
- Vertical stargazer window above bed



COMPETITOR COMPARISON



Single pane lacks insulation properties.



Lacks built in shades. Harder to clean.



Very tiny porthole windows.

STORAGE



BEST IN CLASS PASS THROUGH STORAGE SPACE

KEY POINTS:

- 35 cubic feet of pass through storage space
- Accessible from both sides
- 13" x 30" storage doors on both sides
- Sealed storage for waste hoses
- Magnetic door catches for one-handed access
- LED-lit compartment
- Rear receiver provides additional storage



COMPETITOR COMPARISON



Body-Damaging Metal Catches



Small, Non Pass Thru Door

ALUMINUM STEP



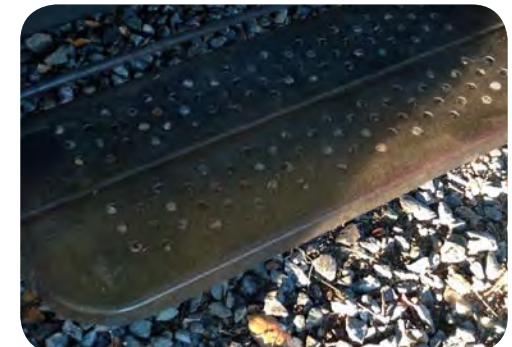
SAFETY & DURABILITY

KEY POINTS:

- No rusting or binding with aluminum
- LED lit step area for added safety at night
- Effortless opening and closing
- Lightweight, yet extra durable

COMPETITOR COMPARISON

- Steel steps rust quickly from moisture
- Rust can cause binding and failure
- Hard to open and close due to binding
- Steel is heavy & requires maintenance



ENTERTAINMENT



BEDROOM TV & SPEAKERS

- 24" HD TV on Swivel Arm Mount
- Jensen External Speakers

OUTDOOR TV & SOUND

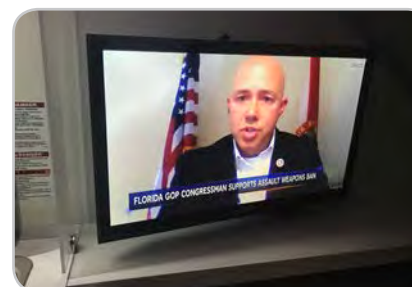
- External Jensen Outdoor Speakers
- HDMI, Coaxial, 110 & USB Power Outlets

CONTROL CENTER

- DVD, CD, USB, Bluetooth, Auxiliary Port + Remote Control
- 3-Zone Audio Control, AM/FM/Weatherband Stereo



COMPETITOR COMPARISON



BEDROOM AREA



60"x80" Queen Size Bed

BED & BEDROOM AREA

- 60" x 80" Queen Size Bed
- Residential-Style Mattress
- Access to Pass Through Storage
- Rear Vertical Stargazer Window
- Cubbies at Head and Foot for Additional Storage
- 110/USB Outlets for Device Charging
- LED Reading Lights

DEDICATED TV & SPEAKERS

- 24" HD TV on Swivel Arm Mount
- Jensen External Speaker System



32"x76" Converted Dinette

COMPETITOR COMPARISON

- Often a cumbersome dinette conversion at this size.
- Dinette cushions instead of real mattress is much less comfortable to sleep on.
- No dedicated entertainment center for bedroom area.
- Typically smaller than a queen size bed.



EASY SETUP



Smart Jack with Height Memory
* option



Rear Camera
*option



Rotating HD Antenna. No cranking.



Thule Awning. One person job.
* option

EASY SETUP



Fridge runs on Propane, Electric, or Battery



Residential Style Thermostat



Fixed queen bed. No conversion needed.



Unclamped Dinette Table. Easy to take outside.

KITCHEN



CABINETRY

- 100% Hardwood Light Maple or Cherry
- Dovetail jointed construction on drawers

SINK & FAUCET

- 16"x16" flush sink installation for max countertop space
- Residential style faucet with detachable sprayer

STORAGE

- Floor to ceiling pantry with adjustable shelves
- Massive drawer under fridge for pots and pans

REFRIGERATOR

- Dometic 4 cubic ft. fridge/freezer
- Auto-switches to Gas/Electric/Battery

COMPETITOR COMPARISON



Shallow, tiny sink. No sprayer.



Cheap Cabinetry

WETBATH



GLASS SHOWER DOOR

- Stands up to all water and moisture in shower
- Competing models in this class have wood doors

DOMETIC MARINE STYLE TOILET

- Tall profile, pedal flush
- Waterproof toilet paper holder

SIZE & COMFORT

- By far the most shower room in it's class
- 26.5" Deep, 6'2" Tall, 41.5" Wide = 47 cu ft.

SHOWER HEAD

- 3 function sprayer with on/off switch
- Conserves water at 2.2 gallons per minute

COMPETITOR COMPARISON



Wooden shower doors.



Less water conservation.

MAX SPECIFICATIONS

Dry Weight	GVWR	Overall Length	Overall Width	Exterior Height
3,010 lbs.	4,000 to 4,200 lbs.	21'	7'	9'7" - 9'9"
Tongue Weight	Fresh Water	Grey Water	Black Water	Interior Height
310 lbs.	20 gal.	30 gal.	9 gal.	6' 7"

Kitchen	Wide	High	Deep	Cubic Ft.
Upper Cupboard (Over Sink)	24"	13.5"	13"	2.44 cu ft.
Apron Fold Out	18"	3"	1.5"	0.05 cu ft.
Lower Cupboard (Under Sink)	23.5"	24"	24"	7.83 cu ft.
Top Drawer (Under Cooktop, with Utensil Insert)	20"	6"	19"	1.32 cu ft.
Middle Drawer	20"	6"	19"	1.32 cu ft.
Bottom Drawer	20"	6"	11"	0.76 cu ft.
Pantry Top (1 Adjustable Shelf)	13"	24"	24"	4.33 cu ft.
Pantry Bottom (2 Adjustable Shelves)	13"	42"	24"	7.58 cu ft.
				25.64 cu ft.
Closet Area				
Closet (2 Adjustable Shelves & Hanging Rod)	17.5"	60"	24"	14.58 cu ft.
Drawer Under Bed	23"	8"	19"	2.02 cu ft.
Open Cubby Over Refrigerator	23"	13"	18"	3.11 cu ft.
Drawer Under Refrigerator	21.5"	11"	19"	2.60 cu ft.
				22.32 cu ft.
Dining Space				
Under Right Bench	21.5"	16"	32"	6.37 cu ft.
Under Left Bench	9"	16"	32"	2.67 cu ft.
Behind Left Bench	5"	10.5"	31"	0.94 cu ft.
				9.98 cu ft.

OVERCOMING OBJECTIONS & SKEPTICISM

"Man, That's Expensive"

A salesperson must be ready to handle objections on price by being armed with facts, and by agreeing with the comment and not being confrontational.

Try this memory recall trick when faced with objections.



W	E	C	B
Weight	Extras	Components	Build Process

"I know how you feel. I felt the same way, but after doing some research, here is what I found out..."

- The raw materials and components in the Max go far beyond the typical throw-away trailer.
- Xtreme Outdoors backs their products with a 1-Year base, and a 3-Year Structural Warranty.
- It's a little more expensive to make a high quality product where weight is critical. A good comparison would be golf clubs or bikes.
- The Max will hold it's value for a long time compared to cheaper throw-away trailers.
- There is a high cost to poor quality. The Max includes solar and rear camera wiring prep. Other trailers require an extra wiring which immediately takes the trailer out of commission for a period of time. The Max also has superior moisture protection, which would take forever to correct in a cheap trailer.
- Make the comparison with a Lexus or BMW, compared to a typical economy car. The economy car leaves a lot out, which leads to added expense down the road. The luxury car is built well and backed 100% by the manufacturer.

Tough Exterior:

- **Tires:** 2-Year Warranty, and 2-Year 24/7/365 Roadside Assistance on the wheels and tires.
- **Chassis:** Welded, tubular steel for strength, not bolted.
- **Windows:** Dual-pane, insulated, acrylic windows that are tinted for privacy and temperature control. Windows also have integrated blinds and screens and open extremely wide.
- **Roof & Cage Construction:** Azdel composite panels for lighter weight, insulation, water and sound proofing.
- **Trim:** Customize your trim colors to your preference.

Residential-Grade Interior:

- **Flooring:** Synthetic PerforMax 500 flooring with resin layer. Provides superior moisture protection.
- **Cabinetry:** 100% residential-grade hardwood with dovetail joint construction. Cabinetry is custom fit around appliances, which allows room for more usable storage.
- **Sink & Faucet:** Large, residential-grade with sprayer arm.
- **Countertops:** Residential-grade Thermofoil seamless tops.
- **Bed:** Full queen with a mattress that is actually comfortable.
- **Air/Heat:** More efficient residential-style ducted system.
- **Entertainment:** HD TV in bedroom.
- **Dinette Cushions:** Marine grade, easy to clean vinyl, not cloth.

24/7 Support

For when a customer has an issue and needs to speak to someone at Xtreme Outdoors. We are available 24/7, day or night.

National Dealer Body

When a repair is needed, there is a service provider nearby. No odd components that a dealer is not familiar with.

Huge Community Presence

Over 150k social media followers at the customer's disposal. For any number of service or camping related questions.



CONCLUSION:

The Little Guy Max is a high-end luxury trailer with these competitive advantages:

EXTERIOR:	INTERIOR:
1. 1 Year Base, 3 Year Structural Warranty	1. 60"x80" Queen Size, Residential-Style Mattress
2. 15" Aluminum Wheels and Premium Kenda Tires	2. Larger Stainless Steel Sink and Pull Down Faucet
3. Largest Pass Through Storage in It's Class	3. 100% Hardwood Cabinetry, Not Laminate
4. Welded, Tubular Steel Chassis for Strength. Not bolted.	4. Larger Fridge That Auto-Switches Power Sources
5. Azdel Composite Sidewalls and Roof Construction	5. Residential-Style Wetbath With Lots of Room to Move
6. Solar & Rear Camera Wiring Prep Are Fully Installed	6. Air/Heat System Uses One Residential-Style Digital Thermostat
7. Dual-Pane, Insulated Windows, Integrated Screens/Blinds	7. Flooring That is Easy to Clean & Prevents Moisture Penetration

Who is the dealership's brand ambassador or point person? Who is your MVP?

Talking Points

- Longer, taller, wider than competition
- Little Guy is a luxury teardrop with Airstream/Lance quality.
- "The Porsche of Teardrop Trailers"
- High end components
 - Azdel/Aluminum cage
 - Dual panel insulated windows
- Real hardwood with dovetail construction
- No staples
- Built to last
- More storage (internal & external)
- True 60" x 80" queen mattress
- Residential interior
- Faucet demo
- Window demo
- Cabinet demo
- Blinds & shade demo
- Show trim on website (www.golittleguy.com)
- Azdel handout
- POS stickers
- The 4 W's:
 - Woodwork
 - Windows
 - Walls
 - Weight

Max Options

Solar	3,010 Lbs
Rough Rider	21'
Awning	Sleeps 3

Mini Max Options

Solar	2,320 Lbs
Rough Rider	17'2"
Rear Window	
Sleeps 2/Tent Option	
(Photos)	

SERVICE & WARRANTY

Please submit a claim prior to performing work:

<http://golittleguy.com/warranty-authorization-request/>

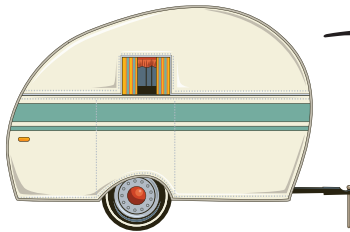
CONTACTS

Warranty: warranty@goxtoutdoors.com

Parts: parts@goxtoutdoors.com

Toll Free: 1-888-469-8688

PARTS & ACCESSORIES @ THE TEARDROP SHOP



TearDropShop.com

Affiliate Program
for Dealers

- 1 Sign Up For The Program
- 2 Add Links to Your Website
- 3 Get Paid for Each Sale



Easy Setup



Use Links or Coupon Codes



% For Each Sale



Partner Dashboard



Social Media Friendly



Get Paid Easily

Learn more at teardropshop.com or call **1-844-834-5701**



The Little Guy Max was named RV Pro Magazine's Best of Show in the travel trailer category at the RVIA National Trade Show in November 2017.



Xtreme Outdoors

1519 Boettler Rd. Suite A

Uniontown, OH 44685

Toll Free: 1-888-469-8688

goxtoutdoors.com

The Xtreme Outdoors Family of Trailer Brands:





LITTLE GUY MINI MAX

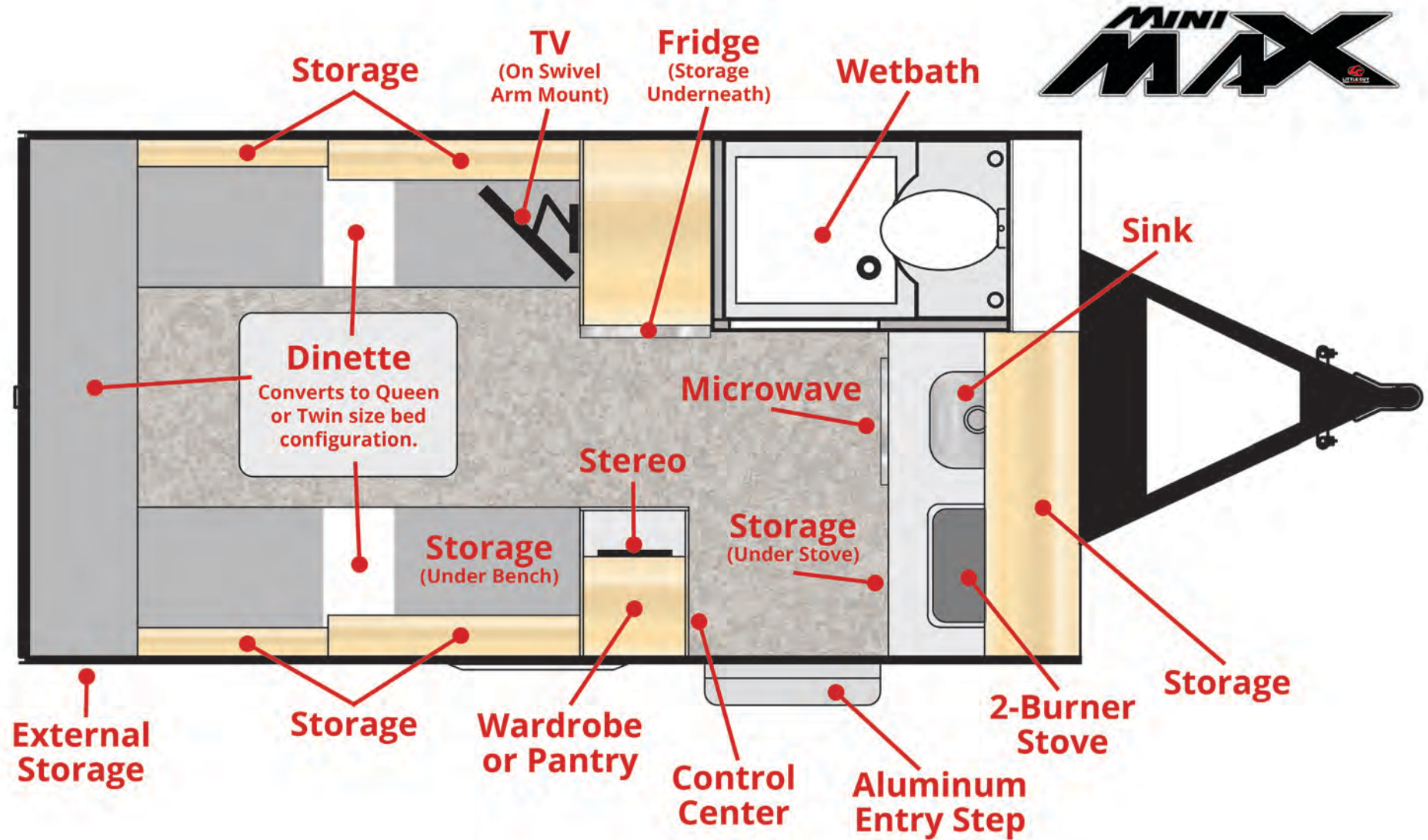
TRAINING GUIDE FOR DEALERS



LITTLE GUY MINI MAX OVERVIEW



FLOOR PLAN

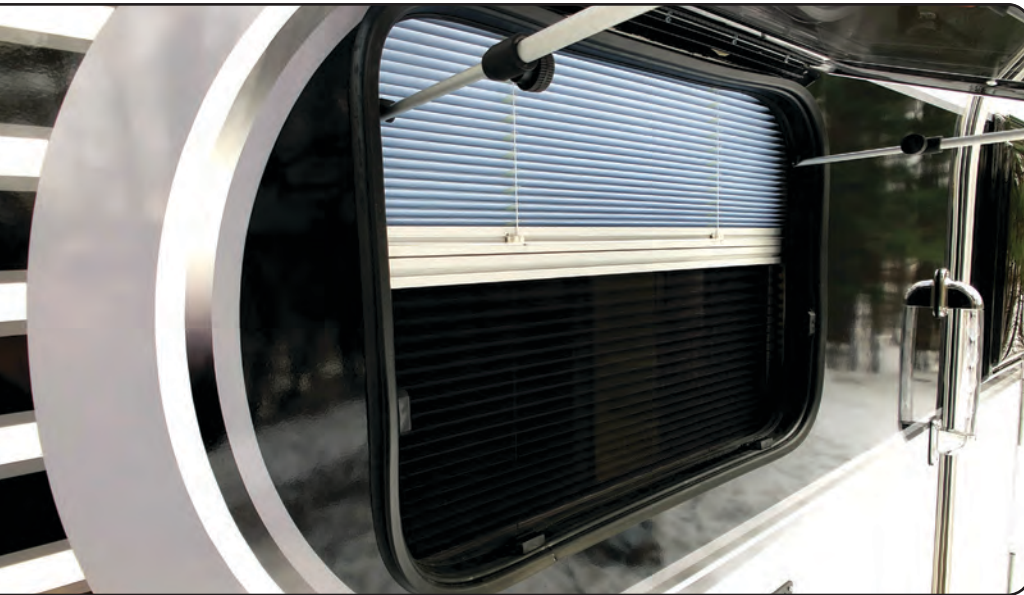


FEATURES & BENEFITS vs. COMPETITORS

Feature	Benefit	Competitor Comparison
3 Years Structural Warranty	1 year covers entire trailer. 3 years structural.	Most competitor warranties do not cover the entire trailer, and are severely limited.
Flooring	PerforMAX 500 flooring with 2 year warranty. Prevents moisture penetration.	Cheap, insufficient flooring materials. Allows moisture to leak in more easily.
Dinette Cushions	Holds up to the rigors of marine industry requirements, provides superior protection.	Typically cloth, much quicker to hold moisture and odors over time.
Tires & Wheels	The Mini Max uses 15" aluminum wheels. Off-road tires available in the Rough Rider package.	Most trailers in this class use 14" steel wheels. Typically, no off-road option is available.
Pass Through Storage	Class-leading storage space with huge doors, magnetic latches, and LED-lit compartment	Typically no pass through storage. Overall storage space is much smaller.
Heating System	The Mini Max has more efficient ducted heat. Digital thermostat is one piece, works just like your house.	Similar trailers cheap out on temperature control, using separate analog gauges.
Ceiling Height & Room	6' interior height in the Mini Max, can accommodate just about anyone. Overall, very roomy.	Typically cramped with a shorter ceiling height. Inefficient use of space with many round edges.
Kitchen Sink & Faucet	Residential style, 16"x16", stainless steel sink with removable spray faucet arm. Conserves water.	Smaller trailers will usually cheap out on the sinks and faucets. Shallow, with limited range.
Wetbath & Shower	The Mini Max includes a glass shower door and a residential style floor-to-ceiling surround.	Typical in this class is a wooden shower door and substandard moisture protection.
Cabinetry	100% hardwood, not laminate. Dovetail joint construction. Choice of Maple or Walnut species.	Another area where competition cheap outs. Poor construction, laminate "wood" cabinets.
Solar & Backup Camera Prep	The Mini Max comes fully prepped. No wiring necessary. Simply add the option when ordering.	Adding these options is usually more complicated. Wiring may be necessary.
Smart Power Control	Fridge auto-switches propane, electric, or battery. Hot water tank runs on electric or propane.	Very little in the of way smart power control. Everything is typically manual in this class.

Our Take: Overall, the Little Guy Mini Max may carry with it a higher price tag, but the quality, attention to detail, and additional touches noted above will save the customer cost, frustration, and down-time in the long run. The informed, savvy customer will respond positively to the mention of these items, which will help overcome any skepticism the customer has on the price tag.

WINDOWS, LIGHT, & SPACE



5 LARGE DUAL-PANE WINDOWS

The **Natural Light** and the amount of windows inside the Max is a **WOW Feature** that should be pointed out whenever possible.

6' INTERIOR HEIGHT

The Mini Max is very roomy compared to other models in it's class. The 6' interior height will accommodate almost everyone who steps inside.

KEY POINTS:

- Euro-style, insulated, dual-paned acrylic windows
- Integrated shades and screens
- Wider window opening than most RVs
- Tinted windows for privacy and temperature control
- Vertical stargazer window above bed

COMPETITOR COMPARISON



Single pane lacks insulation properties.

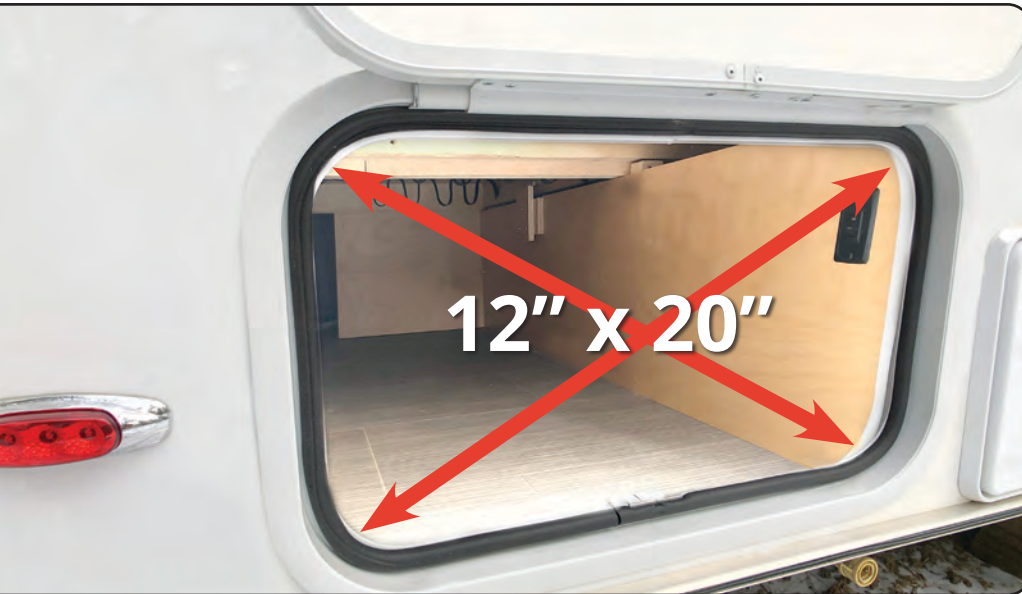


Lacks built in shades. Harder to clean.



Very tiny porthole windows.

STORAGE



BEST IN CLASS PASS THROUGH STORAGE SPACE

KEY POINTS:

- 12" x 20" pass through storage space
- Accessible from both sides
- 13" x 30" storage doors on both sides
- Magnetic door catches for one-handed access
- LED-lit compartment
- Rear receiver provides additional storage



COMPETITOR COMPARISON



Body-Damaging Metal Catches



Small, Non Pass Thru Door

ENTERTAINMENT



BEDROOM TV

- 24" HD TV on Swivel Arm Mount
- Insignia Sound Bar

OUTDOOR TV & SOUND

- External 5" Outdoor Speakers
- HDMI, Coaxial, 110 & USB Power Outlets

CONTROL CENTER

- DVD, CD, USB, Bluetooth, Auxiliary Port + Remote Control
- 3-Zone Audio Control, AM/FM/Weatherband Stereo



COMPETITOR COMPARISON



One TV, No Outdoor Mount



Weak Audio Options

BEDROOM AREA



75"x70" Queen Size Bed

BED & BEDROOM AREA

- 75" x 70" Queen Size Bed
- Access to Pass Through Storage
- Rear Vertical Stargazer Window
- Cubbies at Head and Foot for Additional Storage
- 110/USB Outlets for Device Charging
- LED Reading Lights

DEDICATED TV

- 24" HD TV on Swivel Arm Mount



29.5"x32" Converted Dinette

COMPETITOR COMPARISON

- Often a cumbersome dinette conversion at this size.
- Dinette cushions instead of real mattress is much less comfortable to sleep on.
- No dedicated entertainment center for bedroom area.
- Typically smaller than a queen size bed.



EASY SETUP



Large 5 cu. ft. 3-way Fridge runs on Propane, Electric, or Battery



Residential Style Thermostat



Twin beds



Unclamped Dinette Table. Easy to take outside.

KITCHEN



CABINETRY

- 100% Hardwood Light Maple or Dark Walnut
- Dovetail jointed construction on drawers

SINK & FAUCET

- 16"x16" flush sink installation for max countertop space
- Residential style faucet with detachable sprayer

STORAGE

- Floor to ceiling pantry with adjustable shelves
- Massive drawer under fridge for pots and pans

REFRIGERATOR

- Dometic 5 cubic ft. fridge/freezer
- Auto-switches to Gas/Electric/Battery

COMPETITOR COMPARISON



Shallow, tiny sink. No sprayer.



Cheap Cabinetry

WETBATH



GLASS SHOWER DOOR

- Stands up to all water and moisture in shower
- Competing models in this class have wood doors

DOMETIC MARINE STYLE TOILET

- Tall profile, pedal flush
- Waterproof toilet paper holder

SIZE & COMFORT

- By far the most shower room in it's class
- 26.5" Deep, 6'2" Tall, 41.5" Wide = 47 cu ft.

SHOWER HEAD

- 3 function sprayer with on/off switch
- Conserves water at 2.2 gallons per minute

COMPETITOR COMPARISON



Wooden shower doors.



Less water conservation.

MINI MAX SPECIFICATIONS

Dry Weight	GVWR	Overall Length	Overall Width	Exterior Height
2,320 lbs.	3,500 lbs.	17' 2"	6' 9"	8'11"-9'1"
Tongue Weight	Fresh Water	Grey Water	Black Water	Interior Height
240 lbs.	20 gal.	30 gal.	9 gal.	6'

Kitchen	Wide	High	Deep	Cubic Ft.
Upper Cupboard (Over Sink)	24"	13.5"	13"	2.44 cu ft.
Apron Fold Out	18"	3"	1.5"	0.05 cu ft.
Lower Cupboard (Under Sink)	23.5"	24"	24"	7.83 cu ft.
Top Drawer (Under Cooktop, with Utensil Insert)	20"	6"	19"	1.32 cu ft.
Middle Drawer	20"	6"	19"	1.32 cu ft.
Bottom Drawer	20"	6"	11"	0.76 cu ft.
Pantry Top (1 Adjustable Shelf)	13"	24"	24"	4.33 cu ft.
Pantry Bottom (2 Adjustable Shelves)	13"	42"	24"	7.58 cu ft.
				25.64 cu ft.
Closet Area				
Closet (2 Adjustable Shelves & Hanging Rod)	17.5"	60"	24"	14.58 cu ft.
Drawer Under Bed	23"	8"	19"	2.02 cu ft.
Open Cubby Over Refrigerator	23"	13"	18"	3.11 cu ft.
Drawer Under Refrigerator	21.5"	11"	19"	2.60 cu ft.
				22.32 cu ft.
Dining Space				
Under Right Bench	21.5"	16"	32"	6.37 cu ft.
Under Left Bench	9"	16"	32"	2.67 cu ft.
Behind Left Bench	5"	10.5"	31"	0.94 cu ft.
				9.98 cu ft.



CONCLUSION:

The Little Guy Mini Max is a high-end luxury trailer with these competitive advantages:

EXTERIOR:	INTERIOR:
1. 1 Year Base, 3 Year Structural Warranty	1. 75"x70" Queen Size Mattress or 2 twins configuration
2. 15" Aluminum Wheels and Premium Kenda Tires	2. Larger Stainless Steel Sink and Pull Down Faucet
3. Largest Pass Through Storage in It's Class	3. 100% Hardwood Cabinetry, Not Laminate
4. Welded, Tubular Steel Chassis for Strength. Not bolted.	4. Larger Fridge That Auto-Switches Power Sources
5. Azdel Composite Sidewalls and Roof Construction	5. Residential-Style Wetbath With Lots of Room to Move
6. Solar & Rear Camera Wiring Prep Are Fully Installed	6. Air/Heat System Uses One Residential-Style Digital Thermostat
7. Dual-Pane, Insulated Windows, Integrated Screens/Blinds	7. Flooring That is Easy to Clean & Prevents Moisture Penetration

Who is the dealership's brand ambassador or point person? Who is your MVP?

AFTER MARKET ACCESSORIES AVAILABLE FOR MINI MAX AT TEARDROPSHOP.COM





The Little Guy Mini Max was named RV Pro Magazine's Best of Show in the travel trailer category at the RVIA National Trade Show in November 2017.



Xtreme Outdoors, LLC.
1519 Boettler Rd. Suite A
Uniontown, OH 44685
Toll Free: 1-888-469-8688
goxtoutdoors.com

The Xtreme Outdoors Family of Trailers:

