

Service Bulletin : XTM-0002



Xtreme Outdoors
1519 Boettler Rd. Suite A
Uniontown, OH 44685

Overview:

Some axles installed on the LG MAX and LG Mini, may have been torqued outside the axle manufacturer's specification. This issue has the potential for the axle's hardware to break or become loose from the chassis.

Models:

2021 & 2022

LG MAX & LG MINI MAX

Issue:

Hardware installed on the axle mounts may be torqued under specification.

Correction:

Tighten the axle mounting hardware to the specified torque. 125 — 175 ft.-lbs.

Repair Time:

0.2 hrs

VIN Range:

Non-sequential range:

1X9TT171XM1036406 — 7RUTT2113N1000260

Please contact us with any questions, concerns or comments:

Corporate Office: 1-888-469-8688

Sales Support: support@goxtoutdoors.com

Warranty Office: 1-888-469-8688

Warranty Email: warranty@goxtoutdoors.com

Parts Email: parts@goxtoutdoors.com

Technical Support & Parts Phone: 814-701-4884

Technical Support Email: ts@goxtoutdoors.com

Sincerely,

Xtreme Outdoors LLC.

Safety Notice

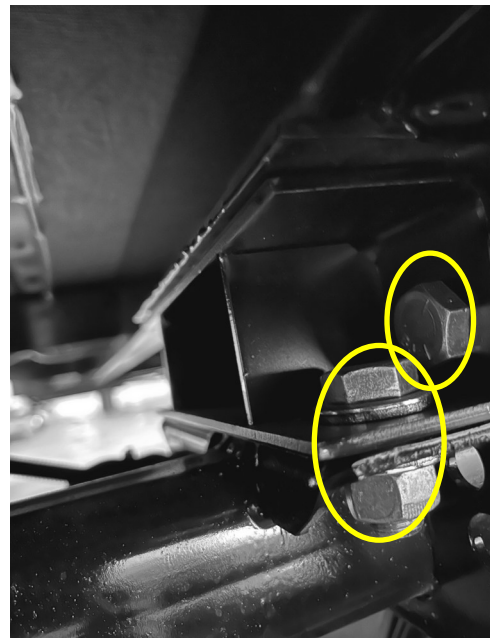
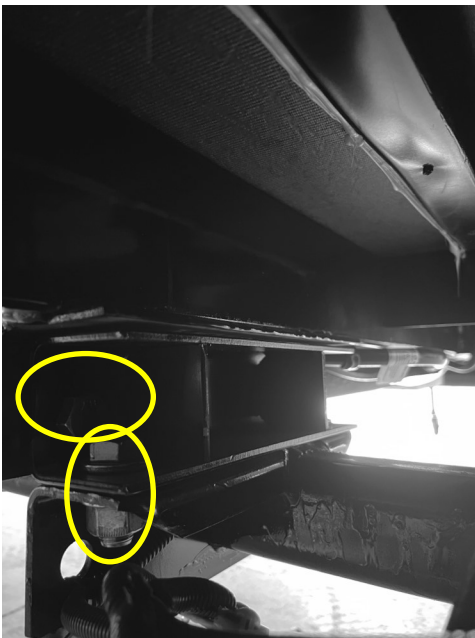
A serious crash, injury, or death, may occur.

Damage to your RV can occur if this bulletin is not applied.



No components will need removed for this procedure.

Using a closed end wrench and torque wrench, tighten the 4 mounting bolts (per side) to the axle manufacturer's specification of 125—175ft.-lbs. (Shown Below)



Axle Type	Torque Specification	Thread Size
#9 Torflex	70-120 ft.-lbs.	1/2" - 13
#10, #11, #12 Torflex	125-175 ft.-lbs.	5/8" - 18