



Models:

Xtreme Outdoors 2021 MyPod

Overview:

We have discovered that the wrong installation method and material was used in producing some of the 2021 MyPods. Trailers affected by this issue, could result in the trailer's wood cabinetry detaching during transit.

Issue:

Adequate mounting hardware was not used when installing the lower cabinet assembly to the frame.

Correction:

Remove the upper cabinet assembly to expose the mounting areas for the lower cabinet assembly. Add additional hardware to the mounting areas, as described in this service bulletin. Xtreme Outdoors will supply the hardware if needed.

Labor Time: 1.5hr + supplies

VIN Range:

Non-sequential range: 1X9TT111XM1036382 — 1X9TT1118M1036896

Please contact us with any questions, concerns or comments:

Corporate Office Sales: 1-888-469-8688

Sales Support: support@goxtoutdoors.com

Warranty & Tech Support Phone: 814-701-4891

Warranty Email: warranty@goxtoutdoors.com

Parts Email: parts@goxtoutdoors.com

Technical Support & Parts Phone: 814-701-4884

Technical Support Email: ts@goxtoutdoors.com

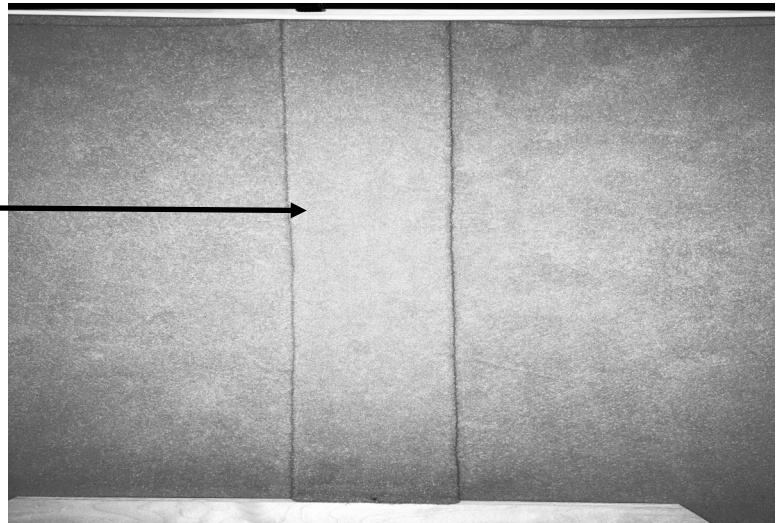
Sincerely,

Xtreme Outdoors LLC.

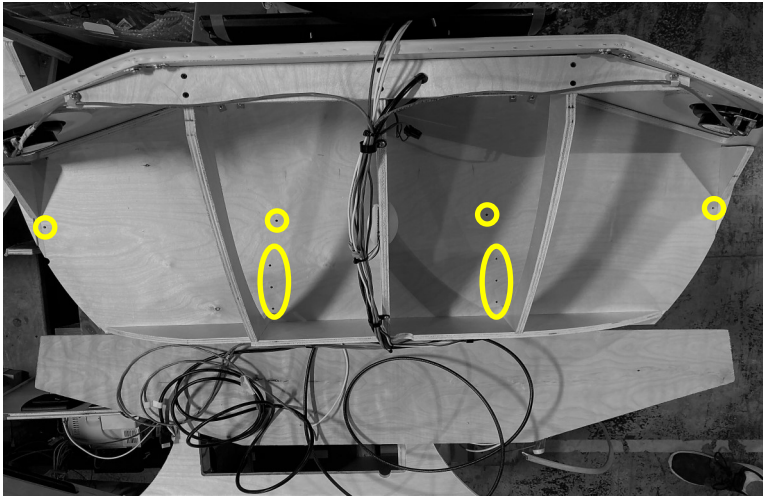


Remove the 1/4" cover board from underneath the front overhang. The back of the coverboard slides into a groove; the front is attached with a single screw

Peel off the Velcro wire cover between the Upper Assembly and the Ceiling Fan

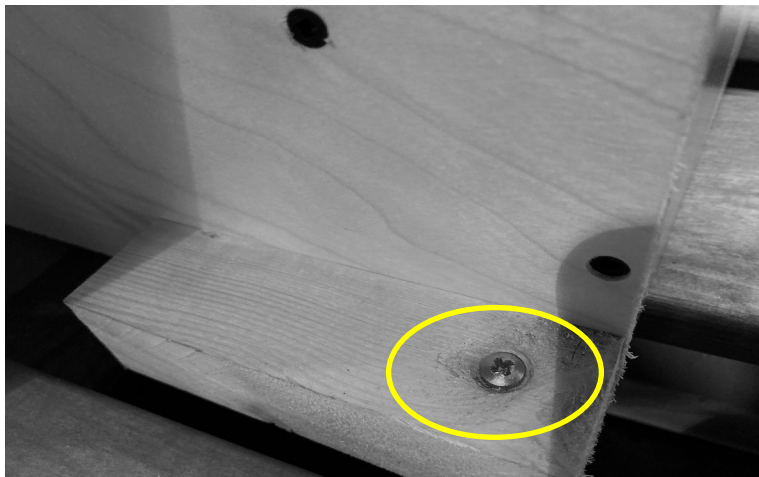
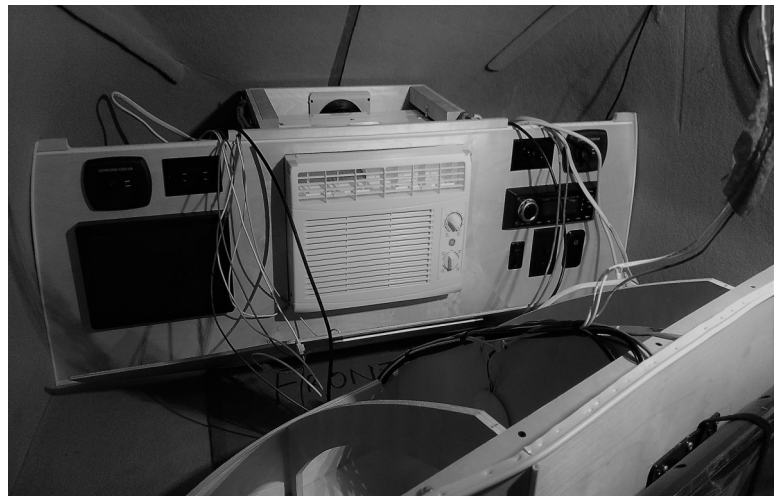


Unplug the A/C from the speed receptacle located in the curbside upper cabinet.



Using a 90-degree drill or adapter, remove (10) 1-1/4 inch black wood screws from the middle cabinet deck. This detaches the Upper Assembly from the Lower Assembly

Slide the Upper Deck forward and set it on the floor. There is no need to disconnect any wires or hoses.



On both sides of the Lower Assembly's AC compartment, are two 2x2 blocks. At present, a single #10 screw goes through each block, through the fiberglass floor, and into the aluminum frame. Remove these screws and discard.

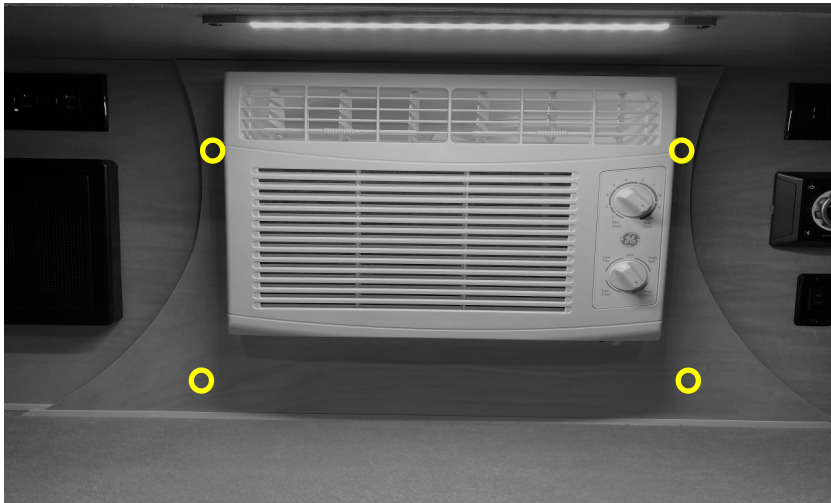


In the same location, install a 1/4-20 x 3-1/4" Reamer TEK screw

Predrill a second location using a 1/4" bit positioned 3/4" away from the first screw location, towards the interior of the camper. Install a second 1/4-20 x 3-1/4" Reamer TEK screw, on both sides of the AC compartment.



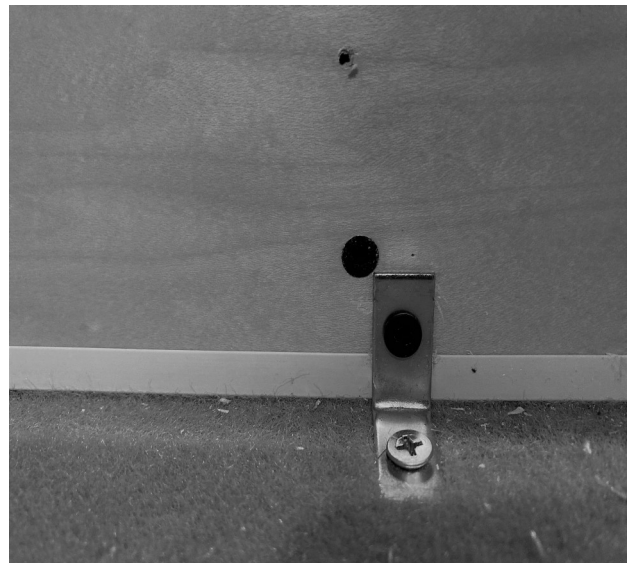
Reinstall the Upper Assembly by reversing these instructions.



Remove the AC coverboard by peeling off the decorative stickers and removing four (4) 1" mounting screws.

Predrill 1/8" holes through the angle holes into the fiberglass floor and aluminum frame.

Fasten two 90-degree angles to the Lower Front wall using two (2) #8 1/2" flathead wood screws.



Fasten the angles into the aluminum frame using #10 x 1" flathead sheet metal screws. Reinstall the AC coverboard with the four (4) 1" mounting screws